

Can OOI AC-S observations be used for HABs remote sensing: case study based on preliminary data

Optical Oceanography Laboratory, College of Marine Science,
University of South Florida

Cheng Xue

2023 OOI Bio-Optics Sensor Summer School

2023/07/21

OOI Data

Coastal Endurance Oregon Shelf
Surface Mooring

site = 'CE02SHSM'
node = 'RID27'
method = 'recovered_host'
deploy=14

sensor = '01-OPTAAD000'
stream = 'optaa_dj_dcl_instrument_recovered'

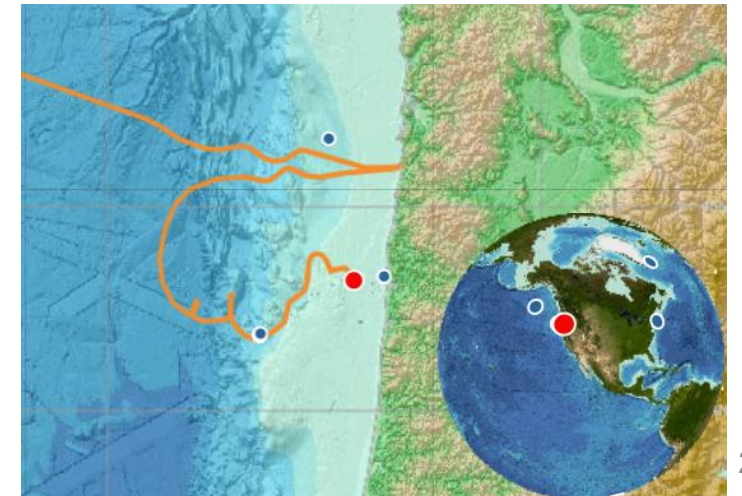
sensor = '02-FLORTD000'
stream = 'flort_sample'

Coastal Endurance Oregon Shelf
Surface Piercing Profiler Mooring

site = 'CE02SHSP'
node = 'SP001'
method = 'recovered_cspp'
deploy=27

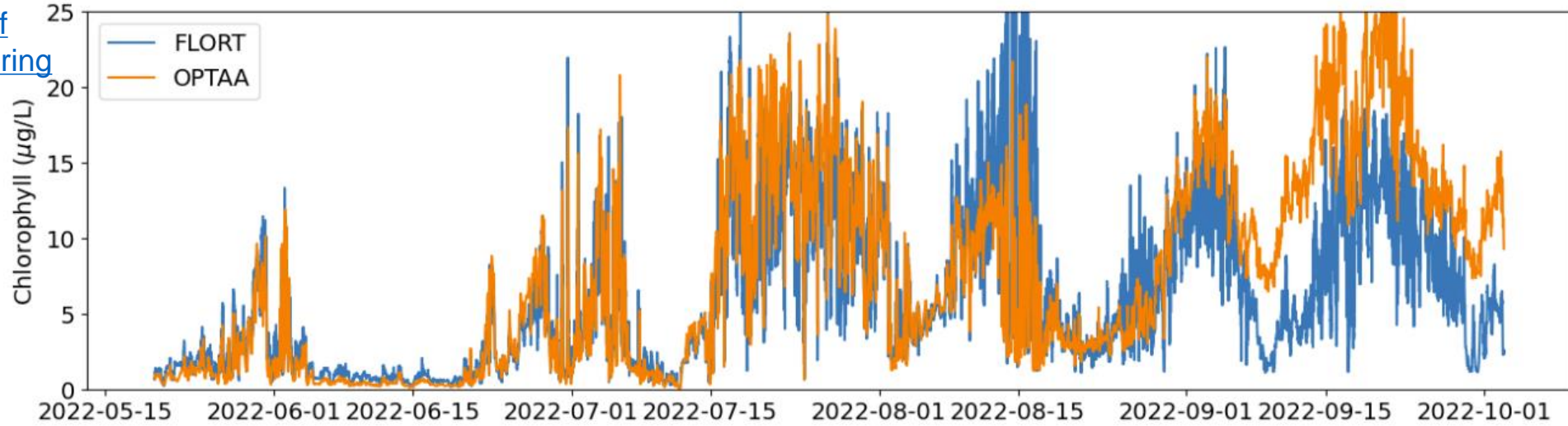
sensor = '04-OPTAAJ000'
stream = 'optaa_dj_cspp_instrument_recovered'

sensor = '07-FLORTJ000'
stream = 'flort_sample'

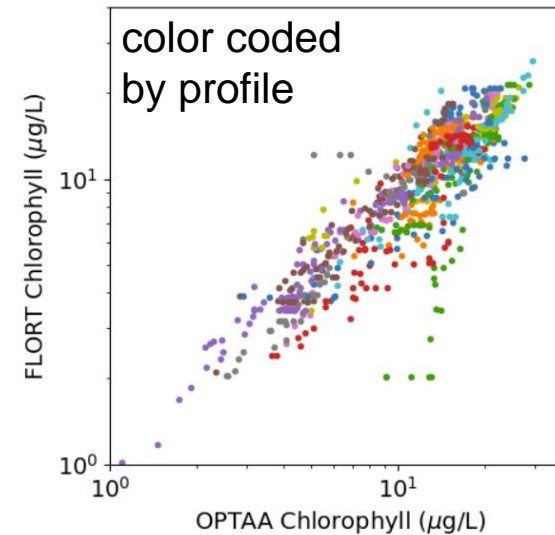
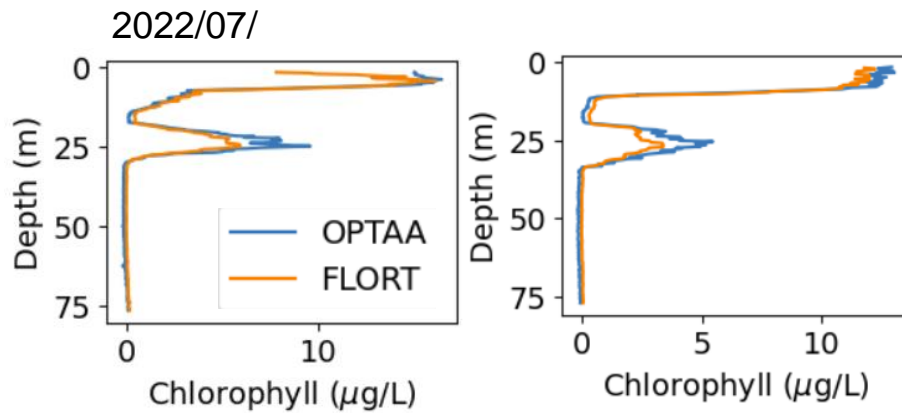


Chl estimated by AC-S line height algorithm can capture high Chl events.

[Oregon Shelf Surface Mooring](#)

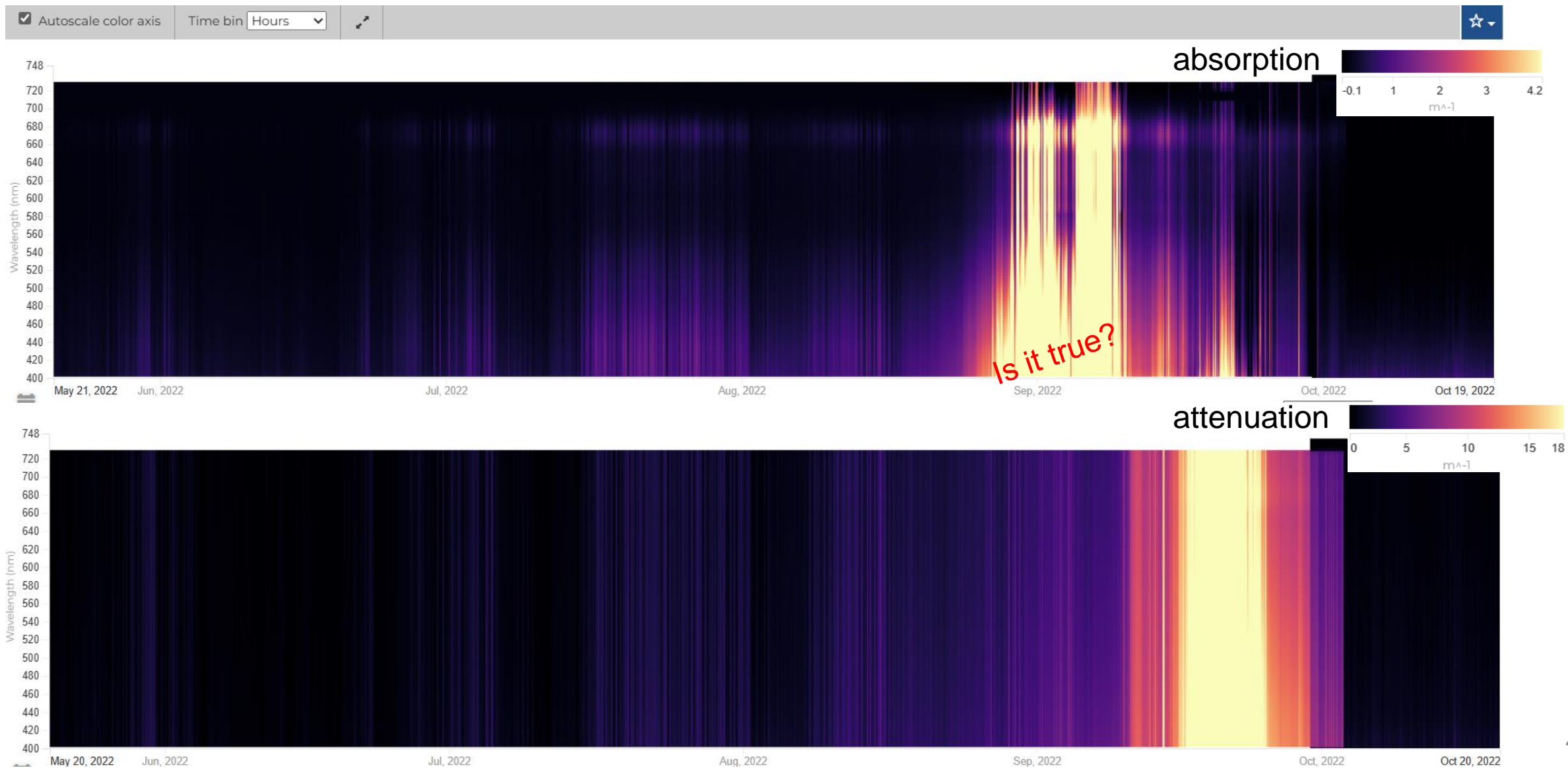


[Oregon Shelf Surface Piercing Profiler Mooring](#)



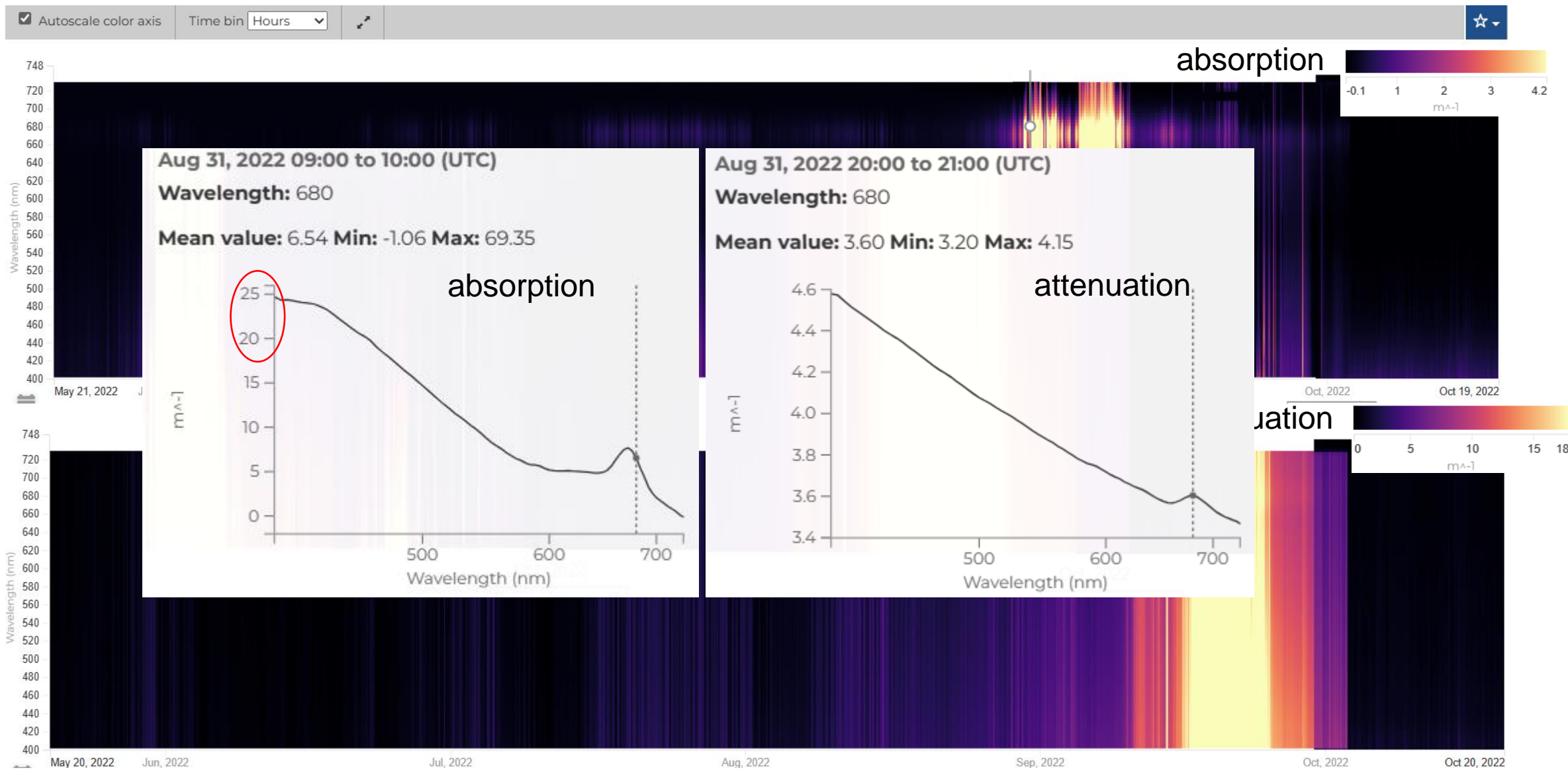
Coastal Endurance

OOI Data Explorer: Oregon Shelf Surface Mooring



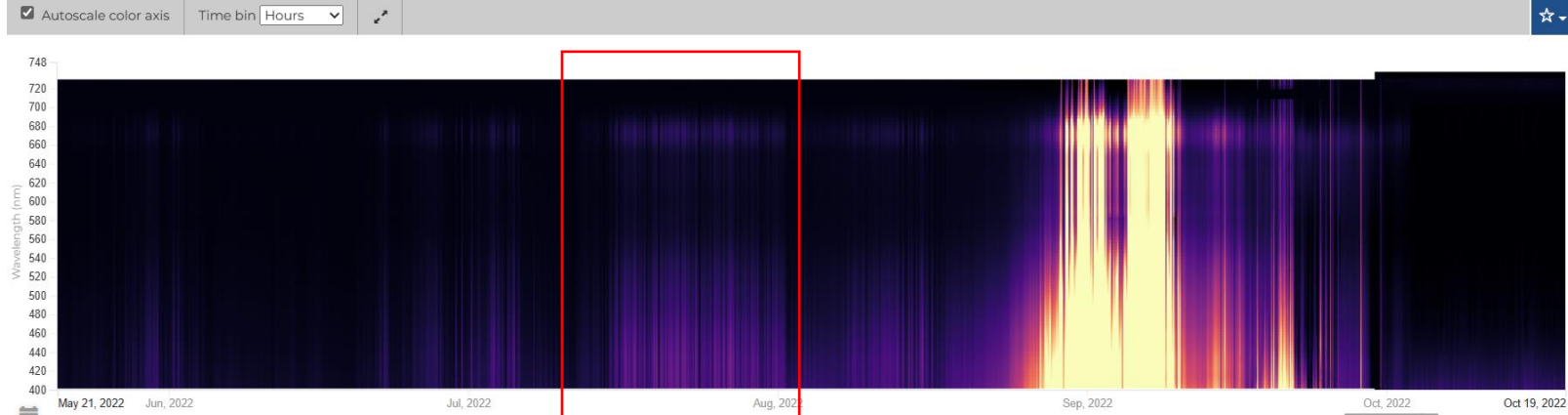
Coastal Endurance

OOI Data Explorer: Oregon Shelf Surface Mooring



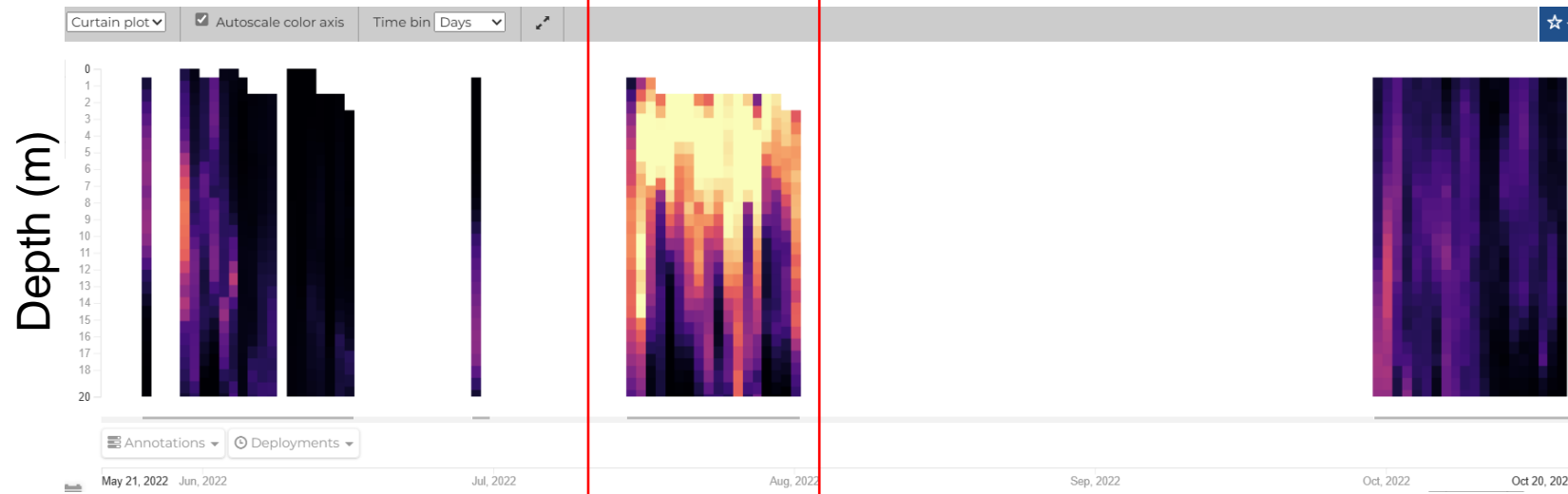
Coastal Endurance

Oregon Shelf
Surface Mooring
absorption



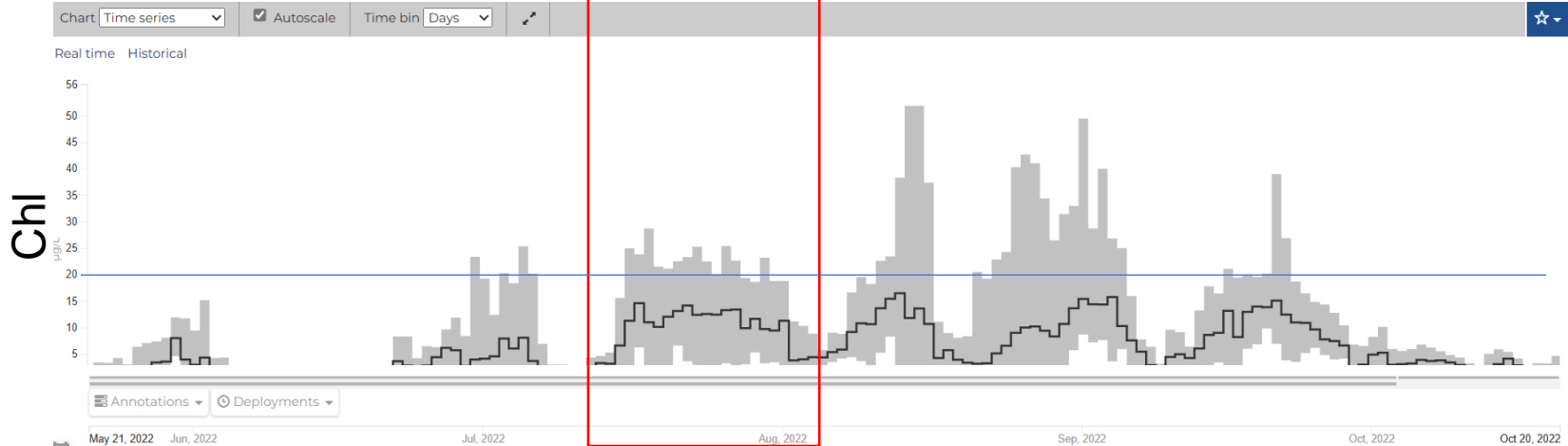
Oregon Shelf
Surface Piercing
Profiler Mooring

FLORT
Chl



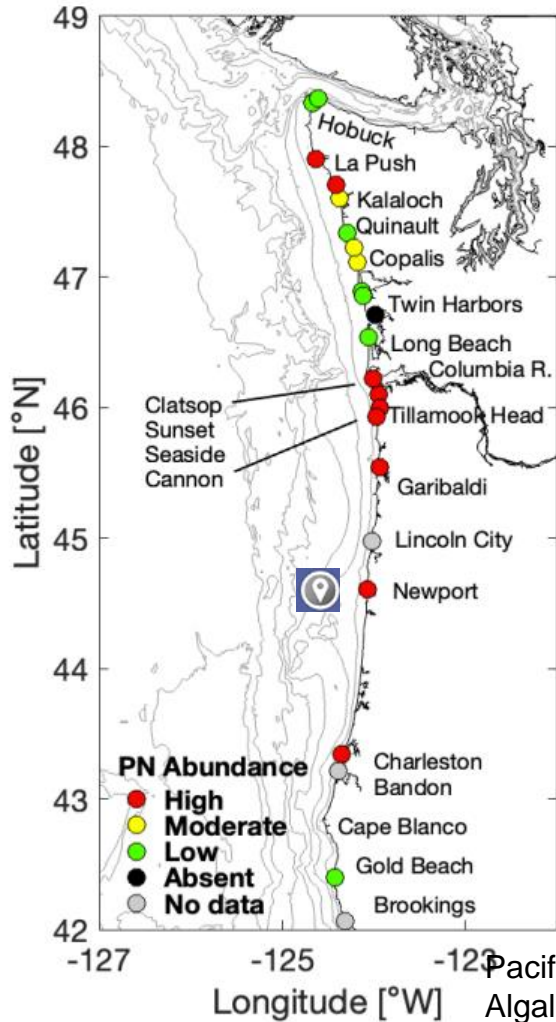
Oregon Shelf
Surface Mooring

FLORT
Chl

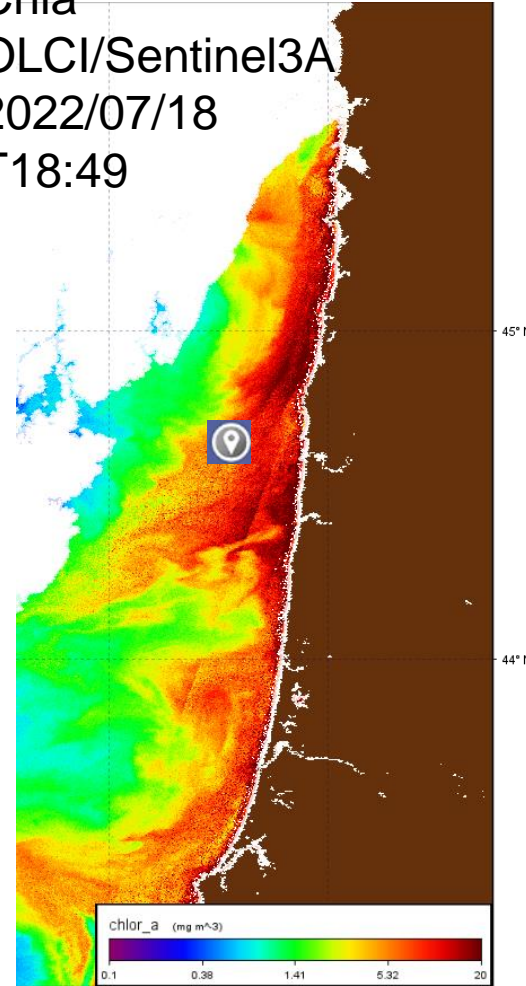


Pseudo-nitzschia blooms

Beach Sampling (Pseudo-nitzschia)

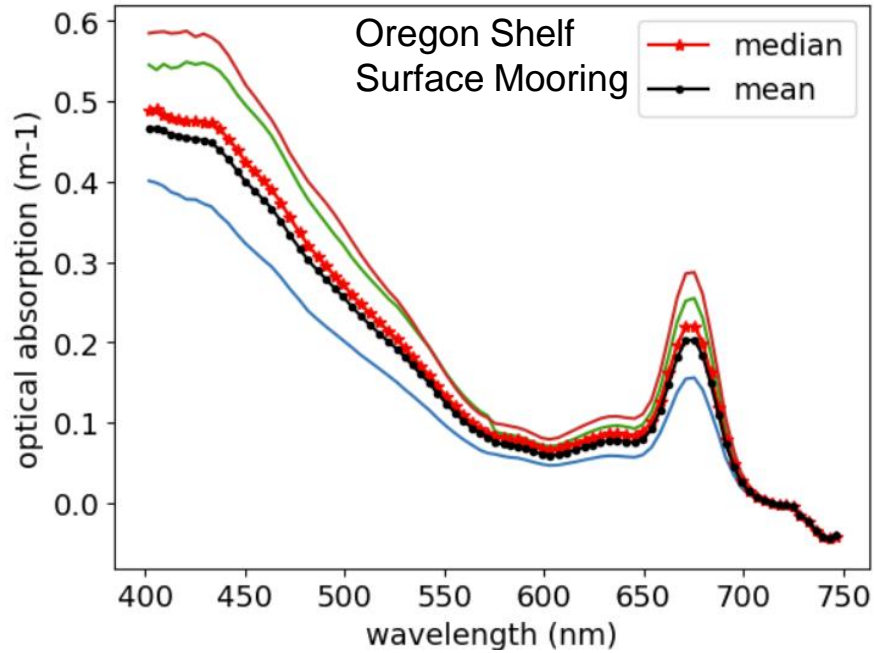


Chla
OLCI/Sentinel3A
2022/07/18
T18:49

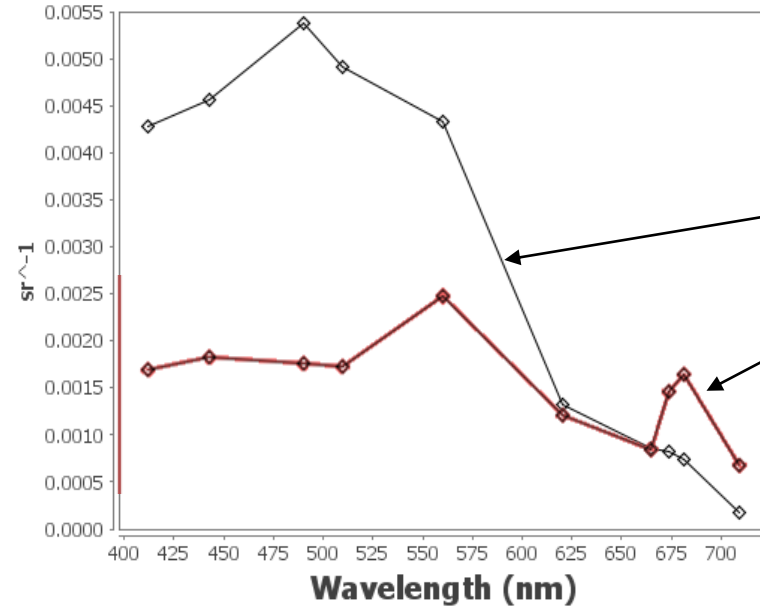


Pseudo-nitzschia blooms

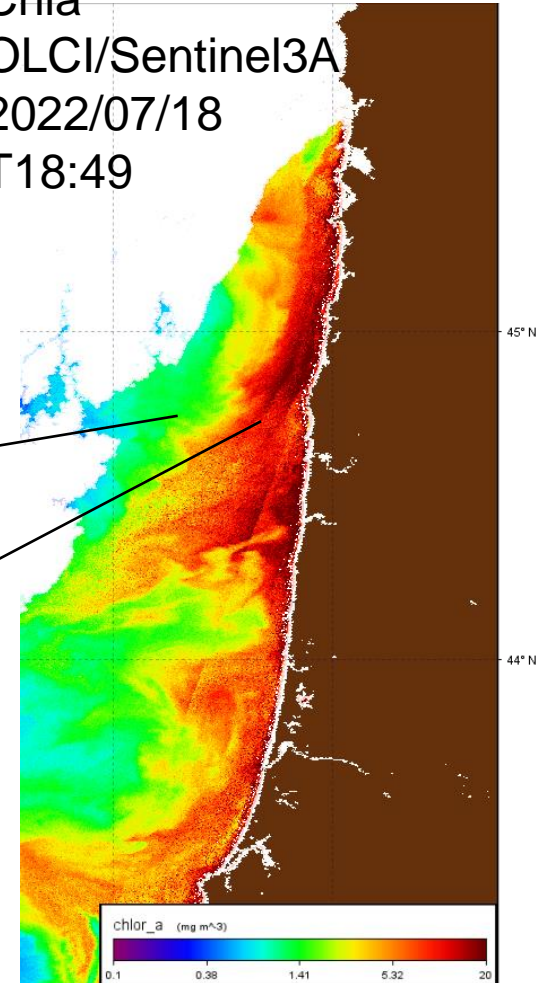
2022/07/18T20:25



OLCI/Sentinel3A Rrs



Chla
OLCI/Sentinel3A
2022/07/18
T18:49



Summary

Data quality control is vital to the application of AC-S observations

The surface and profile observations at the same site could be as reference for data quality of each other.

OOI AC-S observations can be used to develop remote sensing algorithms of *Pseudo-nitzschia* blooms