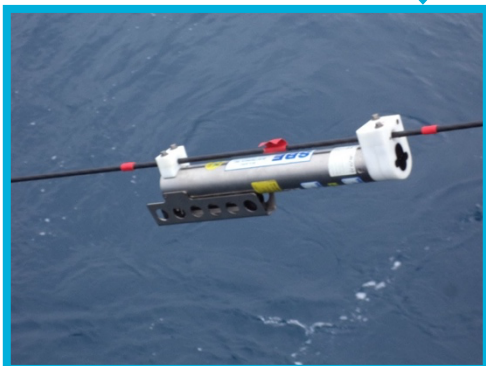
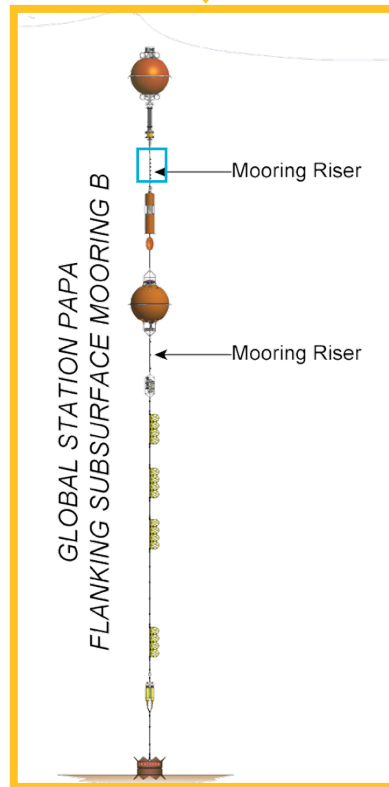
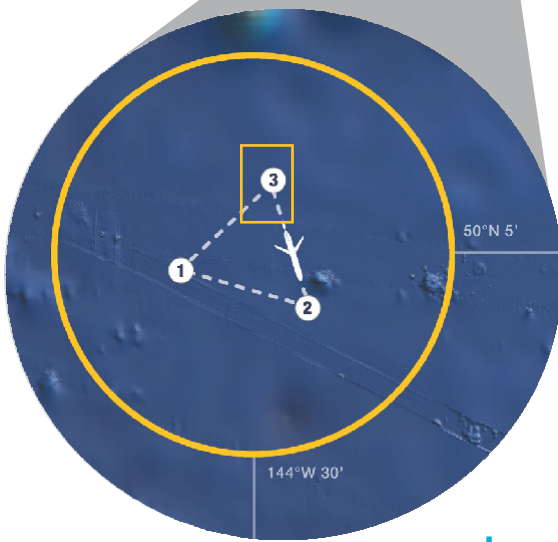


OOI Reference Designator Decoder

GP03FLMB-RIS01-02-CTDMOG060



GP = Array
Global Station Papa

The first two characters denote the Research Array at which the instrument is deployed.

GP03FLMB = Site
Flanking Subsurface
Mooring B

The first 8 characters (including the two Array characters) represent the Site, or Platform on which the instrument is deployed.

RIS01 = Node
Mooring Riser

The next 5 characters define the Node that a specific instrument is plugged into.

02-CTDMOG060 = Instrument
Class CTDMO, Series G
located on Port 02

Sea-Bird - SBE 37IM

The unique instrument code is the last 9 characters. The most useful parts are the 6 characters immediately following the dash which specify the Instrument Class and Series.