



Update from the Operator OOIFB Town Hall

John Trowbridge

December 14, 2021





Mission: Sustained Data for a Changing Ocean

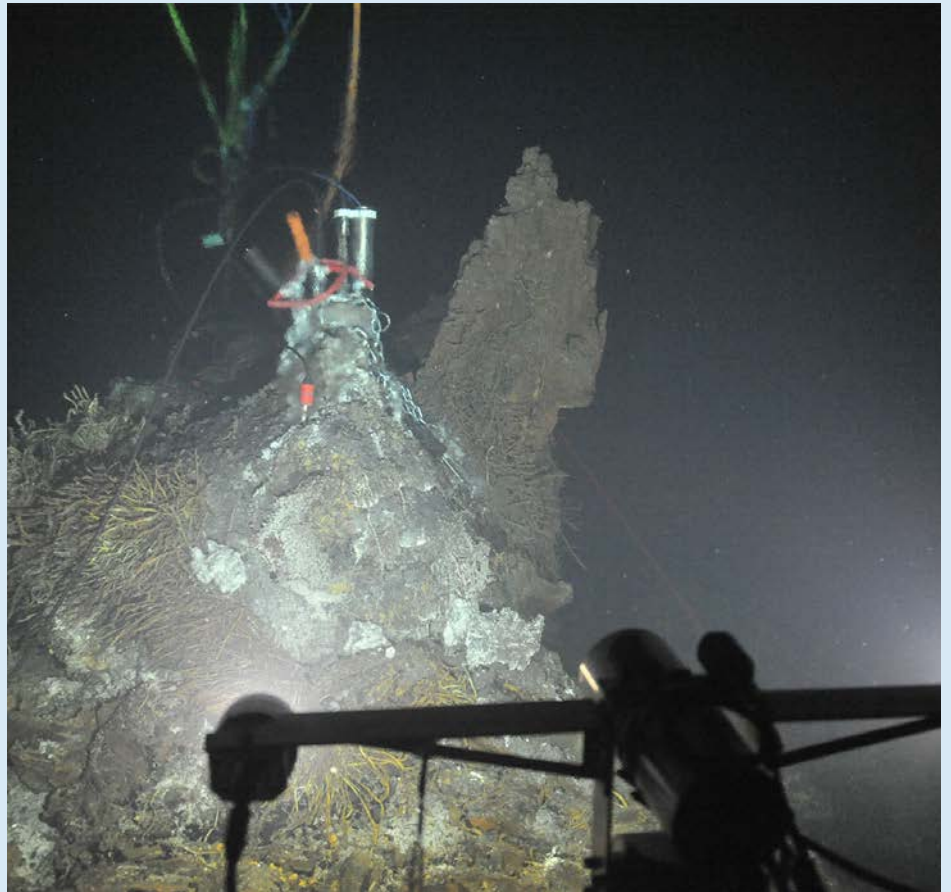


Sponsored by NSF. Operated and managed by WHOI, UW, and OSU.

- Management
- Refurbishment
- Cruises
- Cyberinfrastructure
- Community Engagement

2021 Accomplishments

- Seven major cruises
- Support for Pioneer site selection & high-level design
- New Data Center at OSU
- Partnership building
- Expanding audience reach



RCA Digital Still Camera lights up hydrothermal vent El Gordo. Credit: UW/NSF-OOI/CSSF.



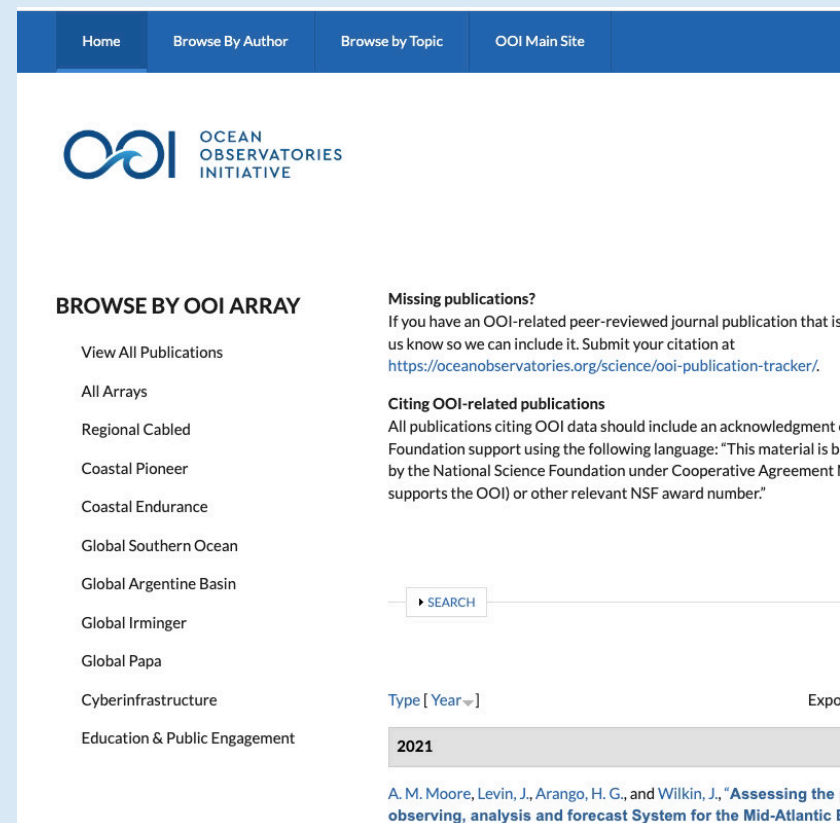
Science Impacts

202 OOI-related publications in refereed journals thru 30 Sep 2021

- 177 lead authors
- 92 lead institutions
- 21 countries
- 5 continents

97 NSF awards using OOI data or infrastructure thru 30 Sep 2021

- \$53.1m total
- 74 lead PIs
- 34 lead institutions



The screenshot shows the OOI website with a navigation bar at the top containing links: Home, Browse By Author, Browse by Topic, and OOI Main Site. The main content area features the OOI logo and the text 'OCEAN OBSERVATORIES INITIATIVE'. Below this is a section titled 'BROWSE BY OOI ARRAY' with a list of arrays: View All Publications, All Arrays, Regional Cabled, Coastal Pioneer, Coastal Endurance, Global Southern Ocean, Global Argentine Basin, Global Irminger, Global Papa, Cyberinfrastructure, and Education & Public Engagement. To the right of this list is a 'Missing publications?' section with a link to submit citations, and a 'Citing OOI-related publications' section with instructions on how to cite OOI data. Below these sections is a search bar with a 'SEARCH' button. At the bottom right, there is a 'Type [Year ▼]' dropdown menu with '2021' selected, and a list of publications starting with 'A. M. Moore, Levin, J., Arango, H. G., and Wilkin, J., "Assessing the observing, analysis and forecast System for the Mid-Atlantic E'.



Why It Matters

Nature Climate Change: Increased risk of a shutdown of ocean convection

Nature Scientific Reports: Anomalous near-surface low-salinity pulses off the central Oregon coast

Nature Scientific Reports: Direct interaction between the Gulf Stream and the shelfbreak south of New England

Science: Inflation-predictable behavior and co-eruption deformation at Axial Seamount

Nature Communications: The mechanism of tidal triggering of earthquakes at mid-ocean ridges





OCEAN
OBSERVATORIES
INITIATIVE

QUESTIONS?

