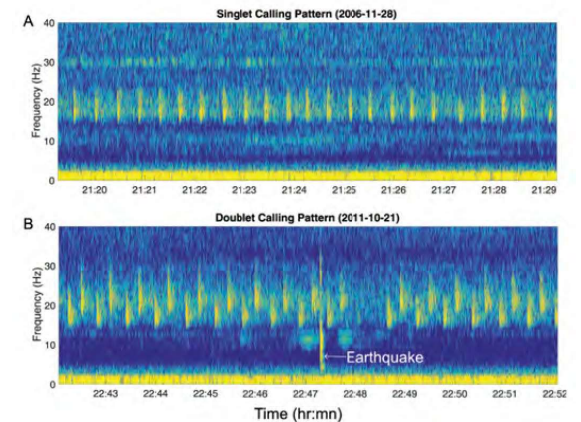
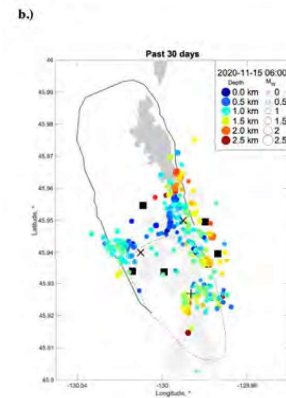
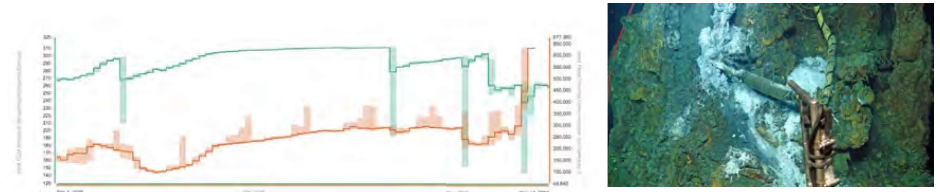
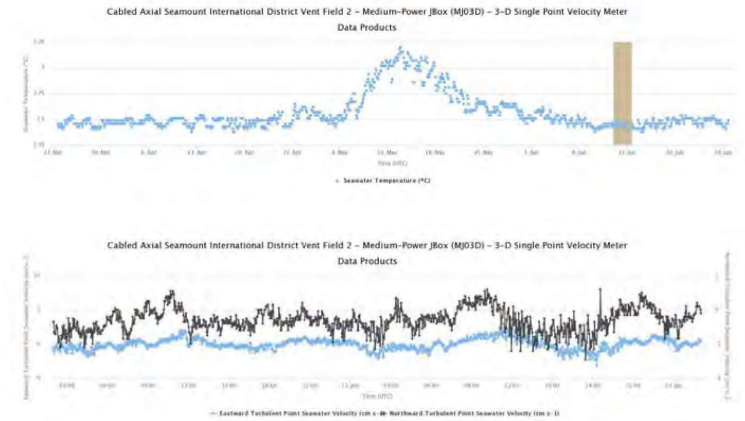


Incorporating Data from the OOI Cabled Array & ONC NEPTUNE Cabled Observatory into UW School of Oceanography Senior Projects

William Wilcock,
University of Washington, wilcock@uw.edu



- Normally student collect data for their senior projects at sea on the R/V Thomas G. Thompson.
- This year we are exploiting existing data bases and data sets.
- Students working with cabled observatories are
 - Looking at correlations between earthquakes and hydrothermal perturbations at Axial Seamount and the Endeavour.
 - Comparing ocean currents at Axial Seamounts with circulation models and searching for the impacts of the 2015 eruption.
 - Studying trends in blue and fin whale calling rates and calling patterns with time and distance from the shore.
- How is it going?
 - Ask me in 3-4 months
 - Analysis tools and a responsive Help Desk will be key.



Images from Senior Project Proposals of Mouffee Borrás, Christine Bronder, Kathleen Gonzalez & Tyler Peterson