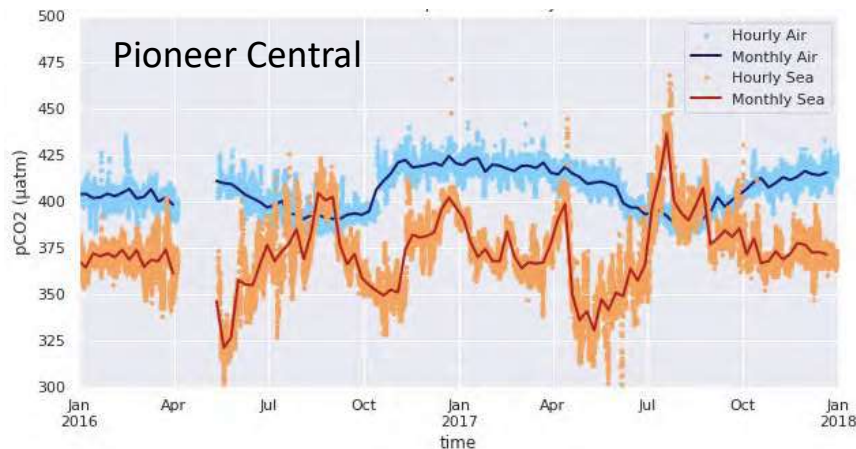


Investigating Drivers of Carbon Flux on the US Continental Shelves (with remote undergrads)

Rachel Eveleth, reveleth@oberlin.edu
Oberlin College Geology Department



- Both Pioneer and Endurance sites are net sinks of CO₂ but drivers differ
- Signatures of coastal upwelling (Endurance) and eddy influence (Pioneer)
- Accessible data for use in undergraduate research using Python in Google Collab. Transition from Data Labs.
- See posters by Brianna Velasco (ED004-0045) and Alison Thorson (ED037-0035) who were part of the 2020 Data Lab Virtual REU

Thermal and Non-thermal decomposition of pCO₂

