



BOEM and Ocean Observing Systems in the OCS

Ocean Observatories Initiative Facility Board (OOIFB) &
Data Dissemination and Cyber Infrastructure (DDCI) Committee Meetings

Guillermo Auad, PhD | Nov 13, 2019



BOEM's Mission and Geographical Jurisdiction

The **Mission** of the Bureau of Ocean Energy Management is to manage development of U.S. Outer Continental Shelf energy and mineral resources in an environmentally and economically responsible way.



BOEM and Ocean Observing

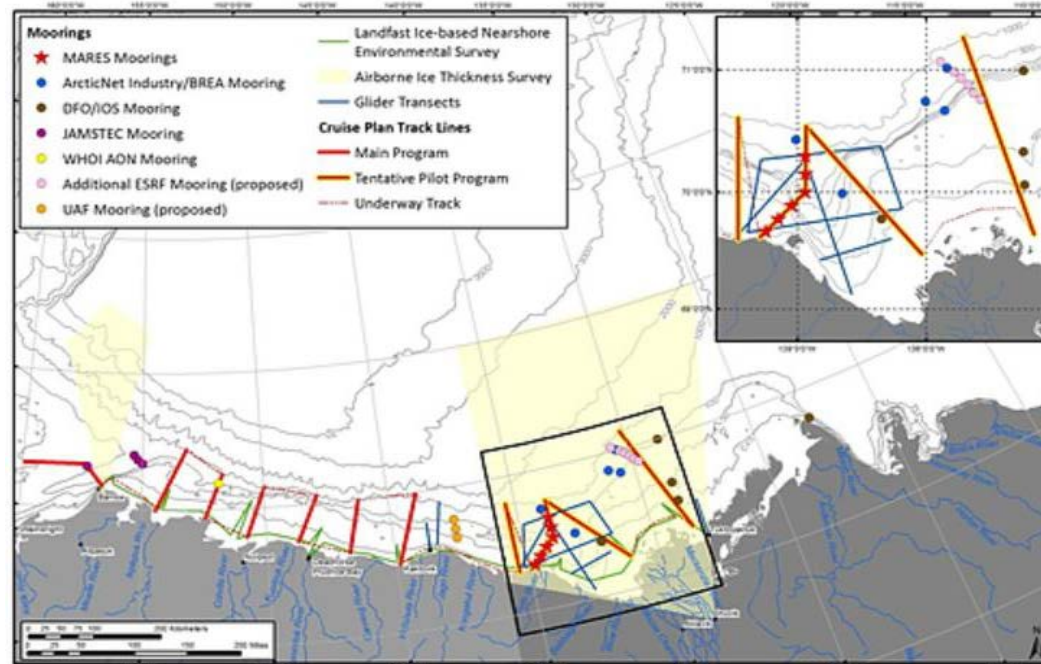
- BOEM's Renewable Energy Office: partnering with **MARACOOS**
- BOEM's Pacific Regional Office: partnering with **SCCOOS and PacIOOS**
- BOEM's Gulf of Mexico Office: partnering with **GCOOS**
- BOEM's Alaska Regional Office: partnering with **AOOS**
- BOEM's National Office: partnering with **IOOS** (2 reps at IOOC)
- BOEM has two members on the **U.S. AON** Board of Directors

Four Examples: Arctic, Atlantic, Pacific, Gulf of Mexico



Arctic: MARES - 2019 Excellence in Partnering Award (NOPP)

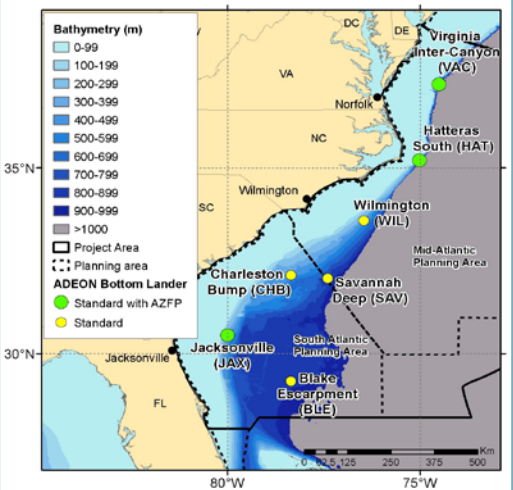
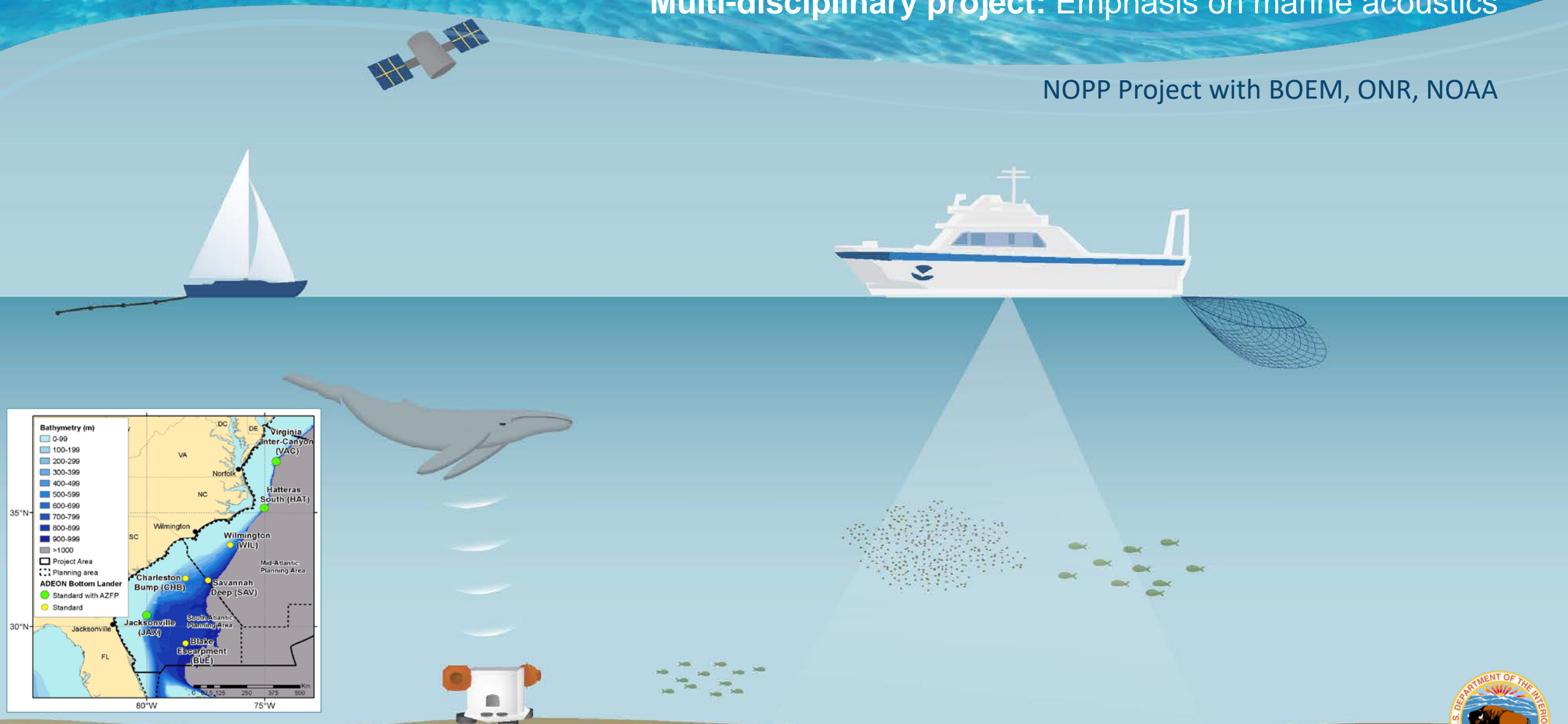
- Beaufort Sea, Integrated Oceanography (social, physical, chemical, biological)
- 25 institutions in the U.S. and Canada (Feds, state, private, tribal, academic) 



Atlantic: ADEON - Atlantic Deepwater Ecosystem Observatory Network

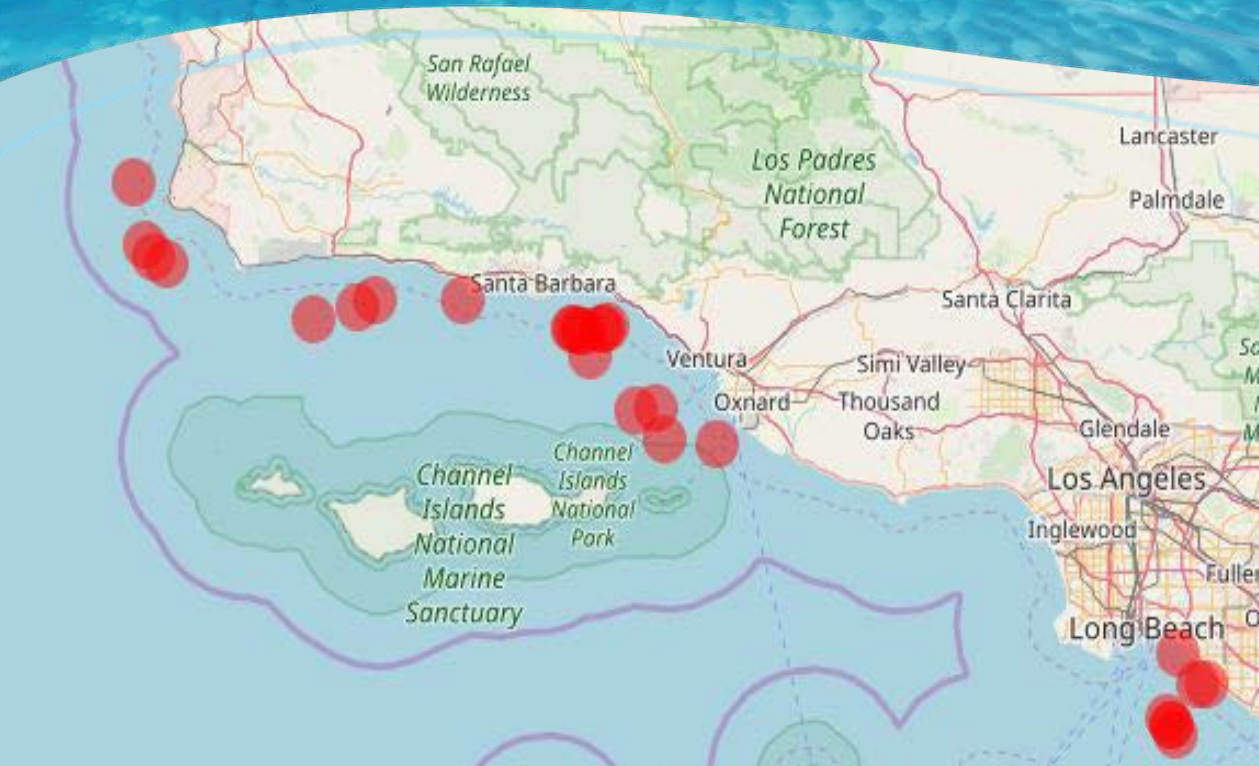
Multi-disciplinary project: Emphasis on marine acoustics

NOPP Project with BOEM, ONR, NOAA



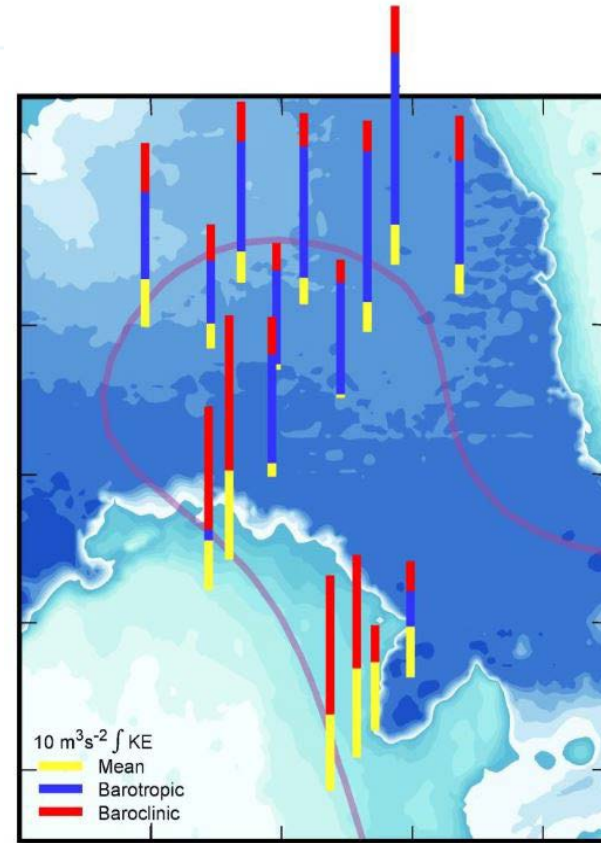
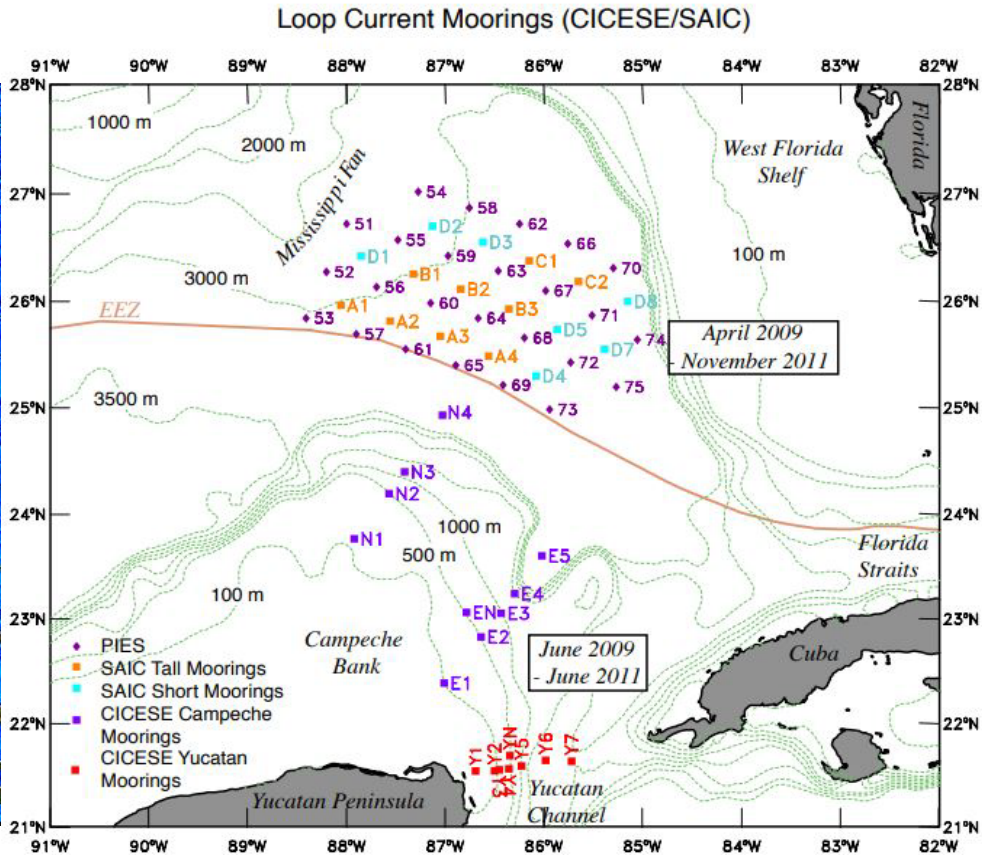
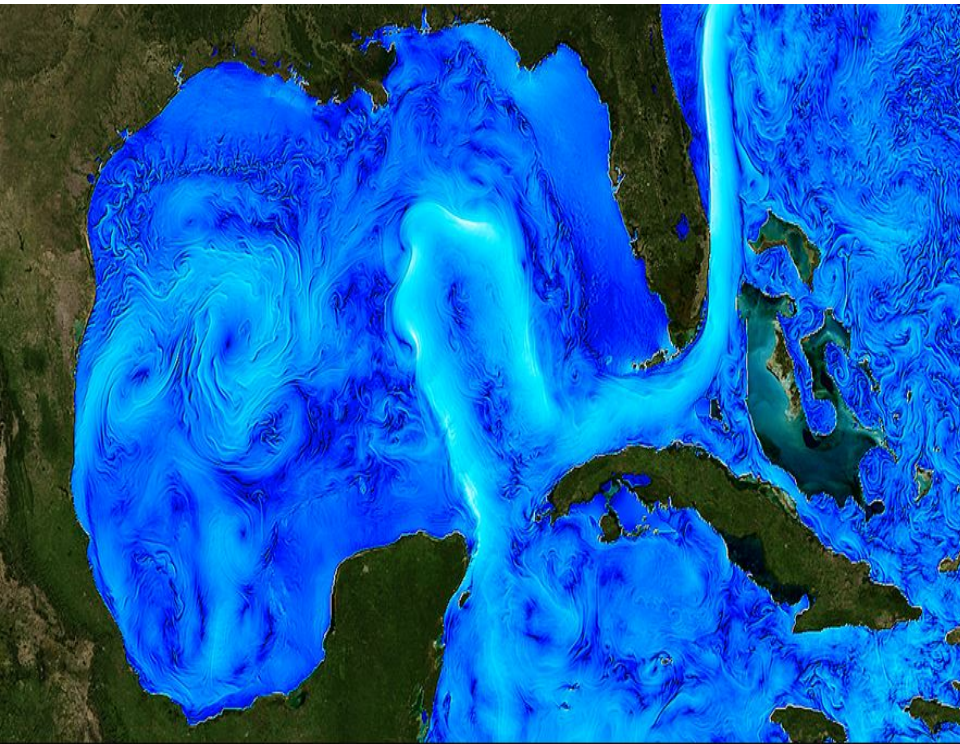
MBON: Marine Biodiversity Observation Network

Partners: BOEM, NASA, NOAA, Shell



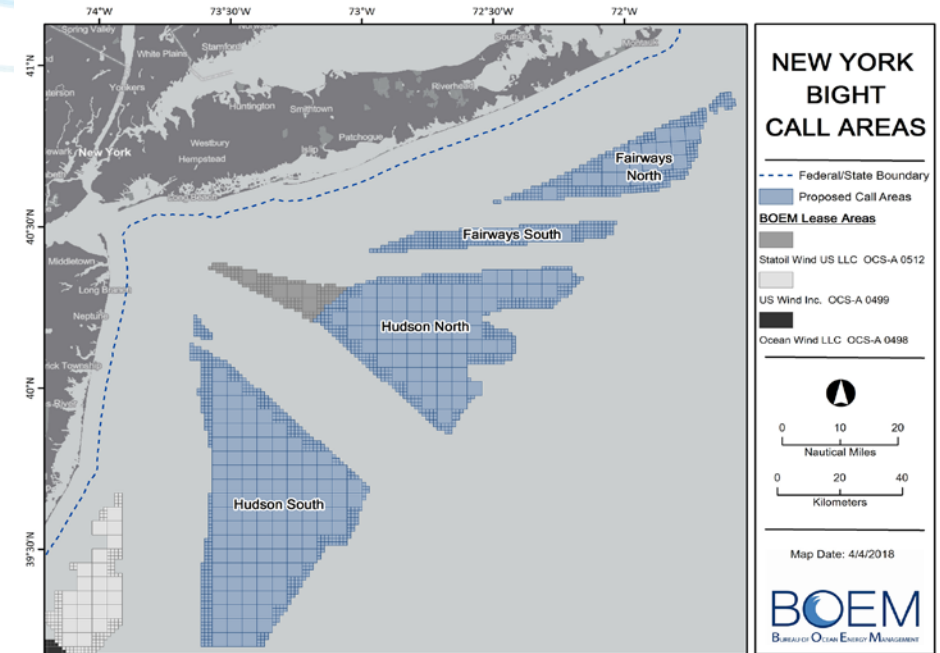
Gulf of Mexico: Loop Current Dynamics Study

USA-Mexico Partnership



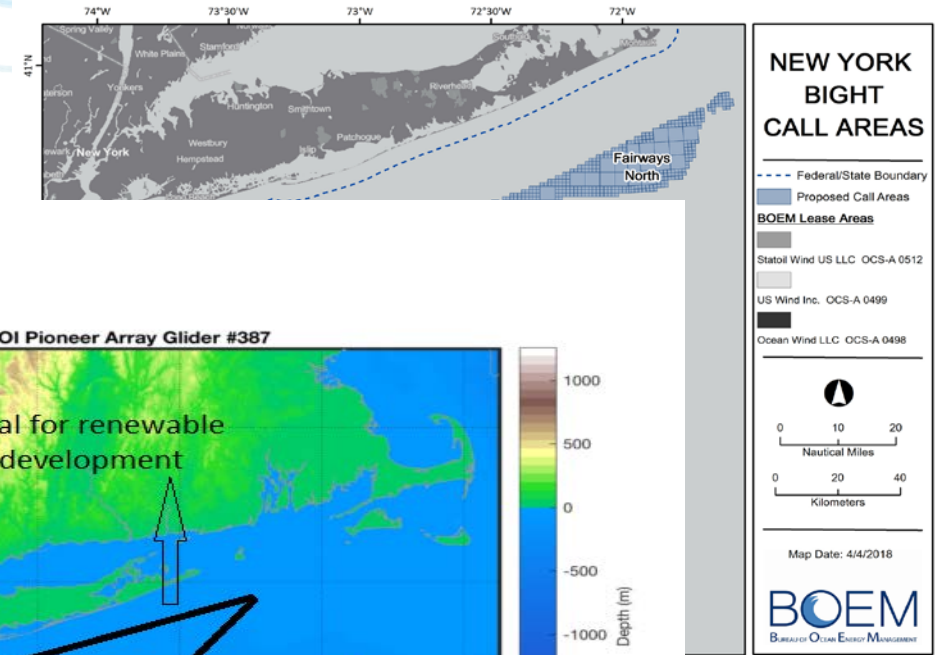
What can BOEM and the OOI team do for each other?

- Pioneer Array data could Help Inform BOEM's decisions on Renewable Energy (glider excursions could reach out further west?)
- BOEM has been collecting observational (and modeling) data west of the Pioneer OOI array
- Wind farms/turbines as observing platforms?
- Early involvement of BOEM when and if planning future arrays in the OCS.



What can BOEM and the OOI team do for each other?

- Pioneer Array data could Help Inform BOEM's decisions on Renewable Energy (glider excursions could reach out further west?)
- BOEM has been collecting observational (and modeling) data west of the Pioneer OOI array
- Wind farms/turbines as observing platforms?
- Early involvement of BOEM when and if planning future arrays in the OCS.



BOEM

Bureau of Ocean Energy
Management

BOEM.gov



Guillermo Auad | Guillermo.Auad@boem.gov | 703.787.1759